

GALLERY news

The Art Society of Tasmania Inc. ABN 73 537 464 400



Patron: Her Excellency, Professor the Honourable Kate Warner
Governor of Tasmania

Vice Patrons: Hobart Lord Mayor, Anna Reynolds and Mr Rob Valentine MLC

ISSN NO: 2206-3722

Newsletter No 84

Nov-Dec 2020



‘..between the devil and the deep blue sea - get to work on your art for Waterways
and have a devil of a time over the Christmas and New Year period’
(*Watercolour, Grant Lennox*)

Stay up-to-date at www.artstas.com.au





From the President	2
Heritage Art Group- 'Celebrating Nature'	3-7
'Light and Shadow'	8-10
Exhibition and workshop diary	11
Library News	12
Online demonstrations, membership news, con- tact and payment details	13
Framing notice, Volun- teers, Art Tips, Editors Corner	14
'Have a Go', Surface Ex- perimentation	15
A New Life Member	16-17
Rotary Art Show High- lights	18-19
Solo Exhibition Tips	20-21
Member News	22
Invitations and notices	23

Acknowledgements

Jessica Randle, Maggie Bullock, Kaye Volkman, Susie Meech for proof reading. Printed by New-Print, Kingston.

Looking Forward

Congratulations to Joan Humble and the Heritage Art Group for their inspiring exhibition 'Celebrating Nature'.

The Saturday morning opening was very well attended with over 100 people gracing the lawns of the LFG. Lara Giddings gave a great talk and this was followed by a sumptuous feast.

Another very exciting and well overdue event has been the addition of a new Life Member to the Art Society of Tasmania. Vicki Chapman has worked tirelessly for the AST over many years, and her dedication and commitment are worthy of recognition. Congratulations Vicki.

In closing, may you all have some precious time with your loved ones over this Festive Season and we all look forward to a safe and happy new year.

Kind regards
Zane

Zane Yasuda, AST President



Heritage Art Group—'Celebrating Nature'

The exhibition "Celebrating Nature" by the Heritage Art Group headed by Joan Humble OAM was opened at the Lady Franklin Gallery, Lenah Valley, by the Hon. Lara Giddings, former Minister for the Arts and Premier of Tasmania.

Well known artist Joan Humble has been tutoring others and sharing her skills and expertise for decades. She has had a dedicated following over the years and the works are those of artists who have benefited from her tuition.

The collection of 72 works by 18 artists, exhibited between the 7 to 29 November, celebrates the wonders of nature – seascapes, Tasmanian landscapes, animals, flowers and people. Whilst most of the works are oils, Joan's preferred medium, there are also other works in mediums such as pastel. The artworks ranged in size and included miniatures.



Barbara Etter and the Hon. Lara Giddings opening the exhibition

The Heritage Art Group was founded in 1987 and had 7 exhibitions under the name Humble Art And Co. The name was changed to Heritage Art



'Celebrating Nature' (continued..)

Group in 1996. There have been 12 exhibitions under that name, the most recent being held at the Derwent Sailing Squadron in Oct 2017.



Bill Watson and Joan Humble

The membership has changed over the years, but some have returned to Joan's classes year after year. For instance, Bill Watson, whose painting is featured on the Flyer and invitations, has been in the group for 32 years. Some of the other longstanding members include Bob Jager, 29 years, Roger Smith 18 years, and Helen Wright 14 years.

Joan was their tutor, first with Adult Education and for the last 8 years with The Colour Circle at Mt Nelson. She loves teaching and gains so much herself from the interaction with this group.

"I am very proud of the beautiful artworks produced by my fellow artists. It is an absolute joy to bring this exhibition together with the Art Society of Tasmania and to celebrate special aspects of our

lives and environment. We are enriched by seeing the beauty around us, helping us to meet this very challenging year" said Joan.

*If you couldn't make it along to this exhibition at the Gallery then the images can be seen in the AST **image gallery** at artstas.com.au and the ArtSociety of Tasmania Facebook page.*



*'Tasmanian Azure Kingfisher'
Oil on Polymin*

Ruth Bosveld

*(These little birds can be found
along Tasmanian waterways)*



'Pacific Black Duck'
Bob Jager



'Trousers Point Beach'
Oil on Canvas
Bill Watson

'Celebrating Nature' (continued..)



'Breaking Wave'

Oil on Canvas

Vijay Pelham



'Lara'

Pastel

Barbara Etter



'Lilies', Oils, Julie Targett
Peoples Choice Award

'Light and Shadow' – Members Exhibition

The December members' exhibition 'LIGHT AND SHADOW' was opened on Saturday 5 December 2020 by Chris Arnol (Tasmanian Fire Service Chief and Artist). An excerpt of Chris's opening words are provided here for those who weren't able to attend the event.

Light and Shadow are used by the human visual system as cues to determine depth perception and distance. However, prior to 1600s we seldom find painters even attempting a naturalistic depiction of what human beings actually see. Painting techniques were highly stylized... light and shadow only served to model forms, colour was used in flat tints, nothing looked like it was 'real'.... until... this rat bag Italian named Michelangelo Merisi da Caravaggio started fool-

ing around with *Chiaroscuro* (high contrast light and shadow). His work provoked a

major revolution in visual perception, which eventually caught on throughout Europe, to give us the Old Masters, as we know them today.



'Christmas' Chris Arnol



The human eye is attracted to light thus artists often capitalise on this to create a focus. Still today, in Florence, Academic Art Schools actually focus on the darks (shadows)

to make the subject pop. While the *values* hold the key, painters are often described as sculpting with light, which brings colour into the mix (pun intended) – often, with a rule of, warm darks contrasting cool lights or vice versa.

The 20th Century Impressionist/Pointillist took painting to a different level... moving away from Form, experimenting with the science of reflected light from colours being absorbed through the eye. Nowadays I see modern artists shine light through objects to *draw* images using the cast shadows. And there is a wonderful work at MONA that always intrigues me by Gregory Barsamian's *Artifact*; a massive metal head lying on its side, with internal strobe lights illuminating objects that then appear to be moving inside the head.

Our exhibition here in the Lady Franklin gallery is hitting the brief.... I will run through a few of my observations...

Judy Griffiths has given us two lovely small acrylic Still life paintings highlighting long shadows. Suzie Meech's *Chateau Floor*, also exhibits lovely shadows cast from a strongly lit window.



'Summer Sanctuary' Vicki Chapman



'By the Pool', Robyn Malcolm

Vicki Chapman's work *Summer Sanctuary*, similarly, exhibits warmth and shadows.. and across the room.

Robyn Malcolm's *By the Pool* is an impressionistic work playing on the light that we receive in our retina.

Eric Ormerod's nearby *Track Shadows* beckons me to run along the cold sandy track into the warm opening.

Rick Crossland's *Oat Stooks near Pittwater* is a soft impressionistic work reminiscent of Claude Monet's *Hay stacks*.

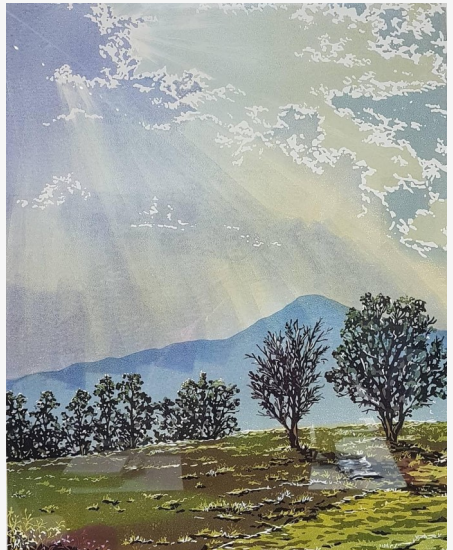
Ruth Sharkey's *City Gate* exhibits many aspects of light and shadow but makes the viewer wonder who will be coming through the gate or curious about what might be just around the corner.

Sally James' *Lino Cut, Lilydale Dawn* gives us shards of light piercing through clouds to illuminate the landscape (Crepuscular Rays).

Nicolette Munro's *Sunrise Browns River* really picks up the different light in the sky as it silhouettes the foreground.

Suzanne Freund's *From South Arm* shows delightfully soft beachy shadows.

Lisbeth Driesson's *Precarious Harvest* con-



'Lilydale Dawn' Sally James

'Light and Shadow' continued....

trasts a light foreground with hay bales against a dark ominous sky using colours from the opposite side of colour wheel.

There are portraits of various sitters with light caressing their cheeks and a range of other works that emphasise reflections with light bouncing off the water ways.

Overall this exhibition has a record 76 works, featuring 45 Artists. All at very affordable prices... by the way. Enjoy the exhibition which continues until Sunday 10 January 2021.

*If you can't make it along to this exhibition at the Gallery then the images can be seen in the AST **image gallery** at artstas.com.au and the Art-Society of Tasmania Facebook page.*



Collage of 'Light and Shadow' Artworks by Susie Meech

EXHIBITION AND WORKSHOP DIARY –Next 4 Months

Please check the website (www.artstas.com.au) and e-mails from the AST President for calendar updates regarding exhibitions and workshops. The website will also have details regarding the changing COVID restrictions and how they could affect planned exhibitions and openings. Please remember social distancing at all times. Visitors and regular gallery groups are doing a great job of recording names and wiping down tables etc.

The committee would like to thank everyone for all being patient

Gallery sitters are always needed. Please volunteer online via the website.

Month	Exhibition	Open- ing	Change-over
JANUARY <i>Hours 11am - 4pm</i>	Dec MEMBERS EXHIBITION LIGHT and SHADOW contin- ued until 10th <hr/> Palette Art Collection, 16th - 17th <hr/> Workshopped 23rd – 31st	Sat 16 th No opening	Collect Jan 10 th Deliver Jan 10 th Collect 17 th Deliver 17th Collect Jan 31st After 4pm
FEBRUARY Water Ways	FEATURE ARTIST Tasmanian Art Group, 6th-28th <hr/> Long Gallery Feb 5th - 14th Entries close 15 Jan	Sat 6 th , 11am	Deliver Jan 31st Collect Feb 28th After 4pm
MARCH AGM 14th March, 4pm Glover 7 th March	MEMBERS EXHIBITION FEAST for the EYES, 6th-28th	Sat 6th	Deliver Feb 28th Collect March 28th After 4pm
APRIL <i>Easter 2 – 6</i>	FEATURE ARTIST Australian Society of Minia- ture Art, Tas MINIATURES, 3rd-25th ART IN ISO Long Gallery April 27 – May 3	Sat 3rd	Deliver March 28th Collect April 25 th After 4pm

We have one new publication:

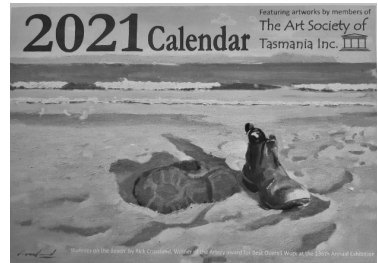
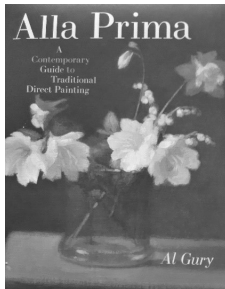
'Alla Prima - A Contemporary Guide to Traditional Direct Painting' by Al Gury. This comprehensive guide explores one of the great traditions of Western painting: alla prima, or direct, painting.

Bold brushwork and a painterly surface are the hallmarks of this renowned technique, and one of the great masters of alla prima was Arthur DeCosta, the legendary Pennsylvania Academy of Fine Arts teacher. In Alla Prima, author Al Gury reveals the step-by-step lessons he learned in his years of study with DeCosta.

From start to finish, with clear explanations of color mixing, palettes, drawing and layering, structure, brushwork, and more, Gury guides readers through the full alla prima process.

Portraiture, still life, figure, and landscapes are explored, all illustrated with the work of the greats, from Rubens, Rembrandt, and Velazquez, through Degas, Manet, and Cezanne, to Sargent and Whistler.

Today alla prima is the ideal choice for artists who want to return to skill-based training yet retain a contemporary style and Alla Prima is the perfect guide to the technique. 160pp.



The new 2021 Calendar featuring artworks by Art Society members is selling well, @ \$15 grab your copy when your next in the gallery but be quick.

We have a new International Artist magazine for sitters to peruse at the desk, green folders of past Australian Artist magazines are in the library now available to borrow.

For new members please don't forget when borrowing to sign out in the BLACK BOOK at the desk and sign your books back in and return to the BIG YELLOW BOX in the library, loan time 4 weeks. Feel free to contact the library officer on 0408295118 or email csmeech@bigpond.com if you have any book suggestions or want extension time. Thank you everyone for frequenting the library throughout such a challenging year, books seem to have had a resurgence in popularity - a plus.

HAVE A HAPPY CREATIVE 2021 Susie Meech

Online demonstrations of interest

Lots of places are doing online stuff but here is a nice example of virtual opportunities through the NGV – you might be interested in the “Drop-by Drawing with...” – which is a four-part virtual series with Victorian artists like Minna Gilligan, Lily Mae Martin and Kenny Pittock showing you how to draw using step-by-step instructions and sharing some of their favourite works from the NGV’s collection.

<https://www.ngv.vic.gov.au/channel/>

Sachie Yasuda

MEMBERSHIP NEWS - Even More New Members!

It must be these amazing exhibitions that we are having as we now welcome even more new members.

Jenny Masters has upgraded from social to exhibiting membership and our other new exhibitors are Antoinette Ellis, Renee Loh and Trevor Newman. Julie Targett and Anne Skerratt are returning exhibiting members and were featured in ‘Celebrating Nature’. A warm welcome to you all.

Zane Yasuda, Membership Secretary

CONTACT AND PAYMENT DETAILS

If you are an AST member having trouble logging onto the web-site then email info@artstas.com.au and let us know.

Secretary and all enquiries	Gabby Muir	PO Box 403, Lenah Valley, Tasmania 7008 info@artstas.com.au or gabby.muir@bigpond.com
Roster	Maggie Bullock	maggie44.b@gmail.com
Gallery News	Sarah Crossland	sarah.munks@utas.edu.au
Library	Susie Meech	csmeech@bigpond.com
Instagram and Facebook	Robyn Malcolm	robynmacolm@netspace.net.au
Lady Franklin Gallery		0490 910 229 Please leave a message
Payments: Membership, workshops	The Art Society of Tasmania Inc.	Direct Debit (please identify any payments) BSB 067005 A/C 28005288 Payments can also be made in person at the gallery by cash, credit card or cheque

Framing Notice

All Hobart framers are getting very busy. Andrew of Just Frames in Moonah has advised that they are booked up till mid January at this stage and January slots are fast filling up. This also means that if members have works for the Waterways exhibition in February, and they wish to use Just Frames, they need to get them to him prior to Christmas. After that they are only working Tuesday, Wednesday and Thursday from the 5th of January until the 31st of January.

Roster Volunteers

Would you like to volunteer? Check out the Gallery Roster on the AST web-site. It is easily navigated and there is plenty of information to help you through. However if you have any problems please contact Maggie Bullock on 040 323 6696 or maggie.44.b@gmail.com as she is happy to assist you.

Art Tips

- Clean your palette at the end of painting— for example, by brushing it all on to a canvas for a base for a future work (from Peter Barraclough)
- With a water colour palette—add a speck of main colour in each mix, this will unify your work.
- Consider painting on a larger than necessary sheet of paper, leaving a large area around the subject to give you room to manouvre.

Betty Debnam

Editors' corner



Christmas edition! Where has this year gone!! I hope this gets to you on time, but such a busy time of year:) Thankyou to everyone who contributed to this edition, particularly those who sent in Christmassy piccies. The committee have agreed to trial four 'seasonal' editions of the newsletter next year instead of six, allowing more time and considering that much of the 'whats on' information is now also available on the website and sent via e-mail. We are also going to try a 'For Sale' section for artists materials in the newsletter. Please send in any items for the Autumn newsletter by the first week in March. I wish you all a relaxing Christmas break and start to 2021.

Sarah



'Have A Go' Surface Experimentation Workshop

On Friday 16th October at the Lady Franklin Gallery .



An enthusiastic group participated in a number of exercises introducing them to using under surfacing in their paintings. The three hour session went so quickly with all members taking home plenty of samples to work on and develop. It was great to see everyone really enjoying themselves taking risks and experimenting. I know everyone present had a great time and had many starting points to take further.

Tutor Terry Gough



'Find your nectar within the colours that match the Christmas spirit.'

Renee Loh

A New Life Member

Vicki Chapman was awarded Honorary Life Membership of the Art Society of Tasmania Inc. on Sat 5th December 2020.

Vicki has worked selflessly and diligently for the Art Society of Tasmania since joining as an exhibiting member in 2006. She became a committee member not long after joining and her first role was the roster coordinator. Since then she has enthusiastically taken on all possible roles within the society including: President 2012 - 2015, Treasurer 2018 - now, Vice President, Membership secretary, Exhibition coordinator and Workshop coordinator.

Over the years Vicki has curated and co-curated a great number of exhibitions at the Lady Franklin Gallery, at Waterways (held every two years) and Art on Show in conjunction with the Royal Agricultural Society of Tasmania and the Lions Kingborough Art Prize. In the above she has



'Irises', Watercolour by Vicki Chapman

Vicki trained as an art teacher majoring in printmaking and has developed skills in oils, acrylics, pastels, watercolour, and graphics. She has taught in various schools, the University of Tasmania, TAFE (Interior Design) and with the Colour Circle. She has attended workshops in Australia and overseas, has regularly exhibited her own work at the Lady Franklin Gallery including a dual exhibition in 2014 (with Susie Meech) as well as many other galleries.

Over the years Vicki has been in constant liaison with the Launceston Art

Society, helped to write funding submissions, stepped in with Newsletter tasks, networked, brain-stormed and problem-solved. She jumps on any opportunity to promote the Art Society to the greater community – including plein air painting at Government House which resulted in an exhibition in the Stables on Open Day.

Vicki quietly does a lot of work behind the scenes such as making certificates for awards, creating labels and catalogues for exhibitions, organising flowers and cards, even delivering home-cooked meals to unwell members. Vicki has cooked for exhibitions and workshops and is always in full swing at exhibition openings. She even

volunteers her dear husband for manly jobs such as installing new shelving and removing rubbish. She has devoted time and energy to the upkeep of the Lady Franklin Gallery including being the leading force in the design and refitting of the kitchen, designing the custom-made front desk, and supervising its installation, repainting the gallery floor, and patching up its walls.



'Moroccan Shop in Arles Fr' Oil , Vicki Chapman



Vicki with other 'Life Members'

A compassionate, down to earth person, Vicki makes people feel welcome and treats everyone with respect. She unreservedly shares her wisdom and good sense with everyone. She knows how to turn a negative into a positive and finds the right words to say in any situation. A team-player, she promotes confidence in her colleagues. Her depth of knowledge is astounding, her sense of fun and humour is infectious.

Vicki has proven herself a great ambassador for the Art Society of Tasmania and it is due to her unwavering enthusiasm, hard work, wisdom, and commitment to excellence that the society has continued to flourish.

Congratulations Vicki!

*Carol Sheppard
VICE PRESIDENT*

Rotary Art Show Highlights

The Art Show was held on the 13-15 November, we had 250 works with two tables, and numerous donated auction items. These included a number of Phil-Art-Thropic items which we introduced into the auction. All items were sold.

We had 65 attending on the opening night; the number was limited this year due to COVID. Despite the smaller number, the auction raised over \$6,000. We had good number of patrons attending over the weekend, despite the current circumstances and the navigation challenges at Wrest Point due to car park works.

Awards were presented to;



Packer's Prize - Grant Lennox -
"Bigger than Ben-Hur - Entertainment at the State Cinema since 1913"



Robin Hood Award - Lauren McLennon - "Tesselated Night Shine"
Viewer's Choice - First Place - Lauren McLennon -
"Tesselated Night Shine"



Viewer's Choice - Second Place - Kaye Volkman -
"Light and Quiet Reflections, Franklin."



Viewer's Choice - Third Place - Karen Marlowe -
"Midlands Lean-To"

Barbara Etter

Solo Exhibition Tips

A solo exhibition is a chance to showcase your work and to make an early impression with your audience building a platform for the future. Make your first show something always to remember.

1. Find a venue that suits your kind of work

When you have decided on your venue take some time to take measurements of room size and how many works of your kind will fit the room comfortably without overcrowding. Check out hanging arrangements, how long you can have the show for, what are the gallery hours and commission rates.

2. Booking the date —Allow time to prepare

When you have decided on a venue you should allow about 12 months at least before booking the exhibition date. This gives you plenty of time to develop your ideas and prepare for the event.

3. Decide on a theme, or a particular focus

The size of works and surfaces - paper, canvas, board etc, all need to be considered. It is probably a good idea to show samples of your work when booking a venue, particularly if you are unknown to the gallery, and a CV or something in the form of a statement about your intentions and ideas related to your art practice.

4. Create your artworks

You may already have pieces ready but need to expand upon them.



Surrounded by paintings. Selection time!!! Getting ready for my solo show at the Hibiscus Gallery in Sandy Bay in 1984

As you complete pieces it is advisable to put them aside in a folder or in a rack so that you know you are working towards the required numbers. Take them out occasionally looking at them in groups and side by side to assess how you feel things are progressing. Remember it is not always the first pieces you will choose. On your journey you may like some of the later pieces better. Leave enough time so that you have this option in your decision making process.

5. Plan the framing

At least 2-6 months before the date of delivery you need to think about framing up keeping in mind consistency in framing. Establish a

framer and a timeline so that you know the work will be ready by the available date.

6. Title of the Exhibition

If you haven't already done so, settle on a title for your exhibition so that publicity and promotion can start.

7. Select someone to open your exhibition

This is important as you can start involving them in the progress of your exhibition.

8. Catering and Insurance

Discuss catering arrangements for your exhibition opening and insurance of works with your chosen gallery.

9. Select Titles and Pricing

Selecting titles for your works and pricing them can be difficult. Sometimes discussing this with people you know well can help. Talk with other artists and look at other exhibitions but importantly take into consideration your costs (tip10).

10. Budget

Take time to think about the expenses you have had on materials, framing etc and allowing for the commission taken from the galleries and importantly the time you have spent in preparing the show.

11. Prepare catalogues, invitations and publicity flyers

This can take time. The more time spent and care given to this area will give the show a promising start. Remembering a good opening starts the show off on a good footing.

12. Promote your show

Start promoting your show to friends, the art community and important contacts as early as possible so that it can be in their diaries. It is up to you to how much you promote your show. Word of mouth and a personal touch cannot be beaten. Use whatever media outlet you are comfortable with. Think about this early in your planning so that you can work towards this.

13. Meet deadlines

Be ready by the set date with all the labels on back of your work with suitable fixtures for hanging. Check this out so you know the set requirement by the gallery.

14. Personal Contact

Be available during your show to meet and greet the public. Even be prepared to give an Artist's Talk.

Good luck to all artists considering having a solo show. Remember to give yourself plenty of time to prepare. Take my word it is well worth taking the risk. There is something very special in having a solo show. I have enjoyed 18 solo shows in my art career. Each have brought me so much pleasure and happiness.

Terrence Gough

Life Member and a Past President of the AST Inc

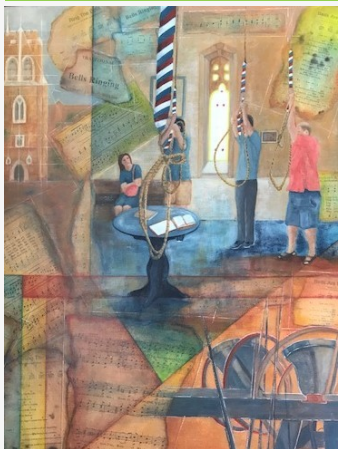


*Reaching the stage when all the works are framed -
Preparing for solo exhibition
Saddlers Court Richmond 2001*



*Lady Franklin Gallery 2015
Enjoying my collection after the
paintings had been arranged.*

Members News



Bell Ringers of St David's Cathedral— Correction for page 22 of the Sept/Oct Gallery News.

Please note that the final paragraph for this article in hardcopies of the newsletter is incorrect. It should have read:

..The Reverend Richard Humphrey was keen to present the painting I donated to the bell ringers (above) earlier this year but it was put on hold until recently due to COVID restrictions.

Apologies to Judy for the error. This has now been corrected in the online version.
Gallery News editor

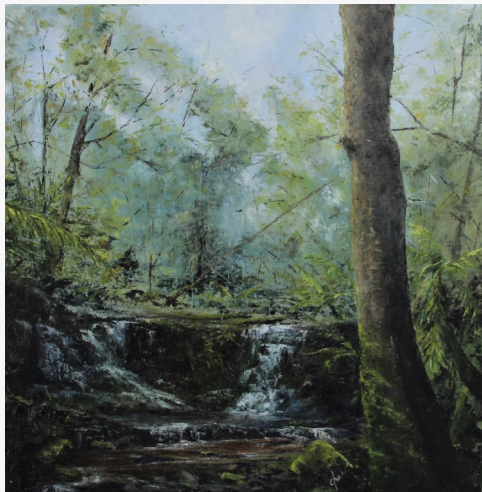
Artists Statement

'Horseshoe Falls-Mt Field National Park'

By Cherie Sibley

Highly Commended Winner at the AST 136th Annual Exhibition.

"Each time I visit this spot I am floored by it's beauty and the light that filters through. I just had to try to capture the tangle of nature's gift."



Two Exhibitions — David Keeling and Images of Tasmania

The TMAG has the David Keeling exhibition spread over 4 galleries. The show is well worth a visit. But please remember to book your visit to the gallery. Tours are available on Fridays, Saturdays as well as Sundays,. But these are available for only 6 people at a time.

Also Images of Tasmania will be on show at the Long Gallery from The 17 th of December until the first week in January. This involves a few members of the LFG.

Diane Casimaty

Invitations and Notices

WATER WAYS is on again!

The Art Society of Tasmania is thrilled to once more be hosting the 'Water Ways' exhibition in the Long Gallery, Salamanca Place, in February 2021.

After limited ability to engage with art exhibitions in 2020, this exhibition gives all Tasmanian artists – painters, printmakers, photographers, sculptors, ceramists, glass and textile artists – the opportunity to share their interpretation of Water.

The major prize is the People's Choice award with the winning artist receiving a \$2000 Artery Voucher. Various other prizes are also available.

Entries are now open! Entries close on January 15th. This selected exhibition will be open to the public from February 5th to 15th.

Go to www.artstas.com.au (Exhibitions menu) for more information and to submit your entry.

Framers are already swamped with pre-Christmas work, so please place framing orders with them early.



We look forward to seeing your art as part of this exciting summer exhibition.

Vicki Chapman
Exhibitions Coordinator

Note: The LFGallery is closed 26th – 27th over Xmas Boxing Day and Sunday



THE ART SOCIETY OF TASMANIA INC. presents

Water Ways

An Exhibition by Tasmanian Artists featuring water

5 - 14 FEBRUARY 2021

LONG GALLERY | SALAMANCA ARTS CENTRE

Level 1 / 77 Salamanca Place, Hobart, Tasmania

www.sac.org.au



ARTERY
137-141 Collins St, Hobart
Art supplies and Framing
Ph: 6234 3788

Just Frames



Andrew Peters from JUST FRAMES is offering a **10% discount for orders depending on the timeframe.**
 22 Main Road Moonah
 Ph:62284463



Picture it Framed 289 Main Rd, Glenorchy.
 Jeremy 6272 7933 / 0413 532 822
 15% discount on complete framing



**PENNICOTT
 WILDERNESS
 JOURNEYS**



Pennicott Wilderness Journeys
Franklin Wharf Hobart TAS 7000
Ph: 03 62344270
info@pennicottjourneys.com.au

Guess the Quote Answer

'Some painters transform the sun into a yellow spot. Others transform a yellow spot into the sun.'

Pablo Picasso

(Thanks to Janice Ford)

