

# GALLERY news

The Art Society of Tasmania Inc. ABN 73 537 464 400



Patron: Her Excellency, The Honourable Barbara Baker  
Governor of Tasmania

Vice Patrons: Lord Mayor of Hobart Cr. Anna Reynolds and Mr Rob Valentine MLC

ISSN NO: 2206-3722

Newsletter No 90

April-May-June 2022

**Interpretations of Colour, Plein Air Painters secrets uncovered and a Pastel Chromatologist revealed**



From The Light in Winter exhibition June 2022  
*'Morning Glow at Cradle'* an oil by Bishal Pandey

Stay up-to-date at [www.artstas.com.au](http://www.artstas.com.au)



## Contents

From the President	2
Its All About Colour	3-4-5
'en plein air'	6-7-8
Workshop review	9
The Light in Winter	10-11
Three Months at a Glance	12
Upcoming Artstas Exhib.	13
Library & Membership News	
Contact and payment details	14-15
Urban Sketchers	16
Notices	17
Alone Time	18
Member News	19 and 21
Exhibition Opportunities	20
Robyn Malcolm	22-23
Art Society Workshops	24-25
Exhibition Notices	26-27
Sponsors	28

## Acknowledgements

*Thanks to Jenny Masters, Vicki Chapman and Steve Roden for proof - reading. Photographs by Gabby Muir, Susie Meech, Jane Battaglione and Nikki Munro.*

## Editors Corner

*Thank you to all who offered their items for this Autumn edition.*

*Please continue to send in your news suggestions to **info@artstas.com.au** or **csmeech@bigpond.com***

*Next deadline for your contributions is the last week in August* **Susie Meech**

## FROM THE PRESIDENT

It has been a delight to stand in the Gallery at recent openings and admire the works on the wall. Our members exhibitions have been well supported and it is great that so many artists are regularly contributing and also giving their time to sit during opening hours. The artworks in our gallery are of a consistently high standard and I believe it's my role to promote the gallery and bring new viewers and buyers to the space. You can also assist by bringing friends and family to the gallery and talking about it to your associates. It is amazing how many people simply have no idea The Lady Franklin Gallery exists in Lenah Valley.

The 138<sup>th</sup> Annual Exhibition will run between 29th July 2022 and 7th August 2022. For members new to the AST the Annual Exhibition is a chance to show off your best work and is the only exhibition in our calendar which is judged. The exhibition will be held in the Long Gallery which will allow you to showcase your work in the heart of Salamanca.

Conditions of entry are available on the website [artstas.com.au](http://artstas.com.au). Please read the conditions as they differ to conditions for exhibitions in the Lady Franklin Gallery.

The Annual Exhibition is a big event to organise and I urge you to consider assisting by volunteering to help with the hanging or sitting in the gallery during the exhibition. It is a great way to get to know other members of the AST and it is rewarding to talk to art lovers who come to view the exhibition. I am excited to see your art works on display.

Nikki Munro



*At Julie Payne's Workshop this month*

## It's All About Colour

*In April this year we celebrated 'COLOUR' in a members' exhibition. The result from such a stimulating subject was made obvious by the diverse and imaginative responses to the theme by our artists. This exhibition was opened by contemporary Tasmanian landscape artist, Jock Young, who provided the visitors with his entertaining recollections of painting in the Tasmanian landscape and spoke about the members' artworks.*



Vicki Chapman introduced Jock and offered some of his background and mediums he uses which are watercolour, gouache, oil paint, and lino cuts. Jock then went on to explain that his main interest is the sea, or more accurately, the interface between the sea and land. His paintings focus on the dynamic between the movement of the sea and the stillness of the land, in which he tries to capture a kind of personality of the location.

Apart from its natural beauty, he spoke of Tasmania's distinct light, which has been the element that has interested him, and is reflected in the rich palette of colours he uses in his work. Sunlight is often a defining element. He had some amusing anecdotes on the difficulties and trials of plein air painting when he is in 'the zone' and coping with well-meaning, but annoying, curious onlookers, asking questions, interrupting 'the flow'. He commented positively on the quality and diversity of the member's artworks.



**Robyn Trousselot** 'Still Life with Balance'



Vicki Chapman talking with the Lord Mayor Anna Reynolds



## It's All About Colour



**Jennifer Eyles** 'Connelly's Marsh'



**Maggie Rees** 'Boid' paper mache



**Dawn Ransley** 'Highlands Winter'



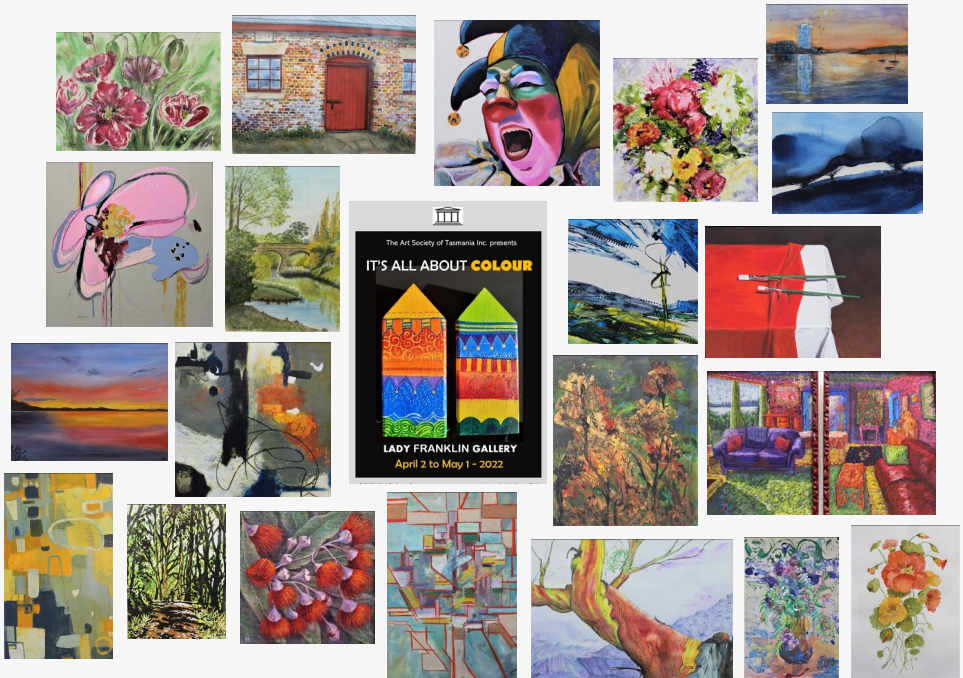
**Terrence Gough** 'Opus 3' a mixed media



**Jane Battaglene** 'Wendy's Garden'  
a pastel



# It's All About Colour



*A selection of works in 'Its All About Colour' for all Titles and Artists, see this exhibition in the Image Gallery at [www.artstas.com.au](http://www.artstas.com.au)*

**Viewers' Choice Winner**  
for  
**ALL ABOUT COLOUR**

**Cherie Sibley**

**'Green Light, Horseshoe Falls'**



## 'Inspired by Plein Air'

*This beautiful exhibition was opened by Cassie O'Connor MP, after being introduced by president Nikki Munro on a rainy Saturday at the beginning of May, at the Lady Franklin Gallery. Despite the weather, it was well attended and intriguing to see the variety of interpretations of the same outdoor venues, by the artists.*



Cassie O'Connor was the opener of **'Flinders, Bruny and Beyond - Inspired by Plein Air'**.

In her speech she emphasised the wonderful results of the participating artists' creative efforts, as a reflection of their response to the beauty of Tasmania and all it offers to those who venture to paint outdoors.

She told the story of close friend Melva Truchanas and her photographer husband Olegas, both ardent conservationists, and their passion and love of the Tasmanian wilderness. She mentioned Max Angus and his contribution with his Lake Pedder art, emphasising

the importance of its preservation. Max, a past president, was part of The Sunday Painters, venturing out plein airing regularly with Patricia Giles and Elspeth Vaughan, all Life Members, always eager over more than 40 years to capture those special moments and the intrinsic beauty of Tasmania.

*A few words from participant Gabby Muir:*

"Members of the Wednesday morning painting group participated in a week-long *en plein air* workshop with Rick Crossland, on Flinders Island last year. This experience sparked the idea of the group, including Rick, of creating an exhibition at the Lady Franklin Gallery, inspired by *en plein air* painting. Rick is a master of 'capturing the light' and he goes out of his way to start, as well as complete his work outdoors on location, sometimes in more than one session. Although some of the artists' work in this exhibition was in fact started outdoors, lack of time and opportunity prevailed, so some of it was completed in the studio - hence the description 'inspired' by *en plein air* as the spirit of the exhibition is none-the-less 'light' and 'air' and a celebration of Tasmania's beautiful outdoors.



*Elspeth Vaughan on location  
Flinders Island in the 1980's*

On Flinders Island the workshoppers painted at Trousers Point, Wybelen-na, and around West End and Leeka, braving the April wind, drizzle and cold - but the highlight was a precious sunny, not-so-windy day spent on Roydon Island - a day none of the group forget - especially Rick's wife Sarah! She even presented us with freshly cooked egg and bacon butties for lunch on Roydon Beach, to aid our creativity, always looking after us in every way possible, with Martin our host, over the whole week.

Eight artists attended Rick's workshop on Flinders, and later others in the Wednesday group took up the idea of a joint exhibition. Various other painting sessions were arranged (some with Rick, and some independently) including in and around Richmond, at Franklin, on Bruny Island and Bellerive Beach.

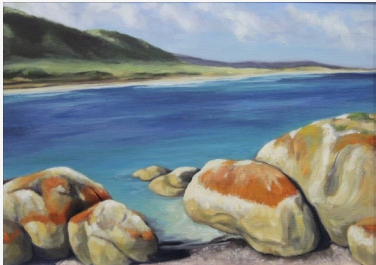
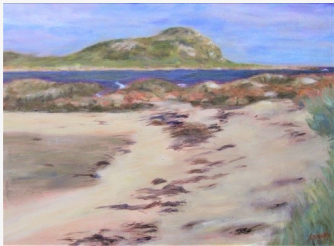
The group thanks Rick for his inspiration, talent, and incredible patience”.



**Participating artists in this exhibition:**

- |                   |
|-------------------|
| Jenny Masters     |
| Helen Barrett     |
| Vicki Chapman     |
| Rick Crossland    |
| Robyn Malcolm     |
| Zane Yasuda       |
| Vicki Nightingale |
| Sue Oxley         |
| Sue Sheehan       |
| Carol Sheppard    |
| Gabby Muir        |

*Sue Oxley*



*Gabby Muir*



*Vicki Chapman*

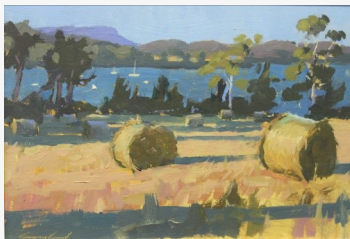


*Zane Yasuda*

*Cont'd*



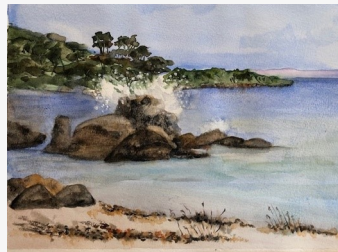
## 'Inspired by Plein Air' continued....



Woodbridge *Rick Crossland*



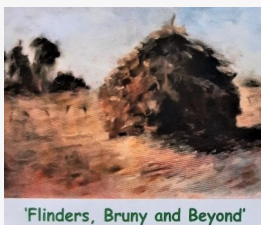
Nutgrove *Robyn Malcolm*



Bicheno *Carol Sheppard*



Saltwater R. *Vicki Nightingale*



'Flinders, Bruny and Beyond'



Bellerive Beach *Jenny Masters*



Melaleuca *Sue Sheehan*



Bruny Is. *Helen Barrett*

### **Artist in Conversation in April was Gemma Black, Calligrapher, Artist and Teacher**

After an introduction by Vicki, Gemma gave an insight into her working life as a calligrapher in contemporary Australia. She explained time periods of the evolution in writing, which gave us a greater understanding of the models that have influenced writing and its use over the centuries, both by hand and digitally.



The talk generated many questions from the audience, regarding Gemma's mention of iconic examples of ancient works and practices. It was all very enjoyable, informative and interesting.

## Workshop with Gemma Black "Lettering in your Art: You might be surprised"



"Many artists welcome opportunities for development, to refine techniques and to nudge ingrained ways of thinking about the art that they produce.

So how would learning about lettering be useful for me?

I'd noticed in contemporary art that words and written forms introduce another dimension, so impactful and at times a really beautiful element.

At my age, one has to prioritise the use of time (there's not a huge amount left!) Gemma Black's session was worth every minute with an engaging and welcoming ambience, apposite videos backing up her presentation, and her generosity and enthusiasm for experimentation.

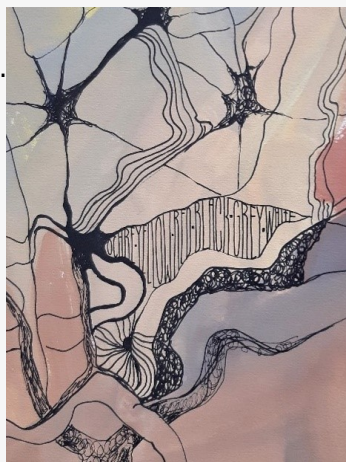
To diminish the 'fear of the white page' Gemma had brought old maps to work on. I chose one of ochre tones (depicting mines and surveys somewhere in Canada so I learnt something there too!).

We sampled large letter forms, used letters as design elements, and experimented with sets of carved alphabet 'stamps' from antique letter presses.

Gemma's fascinating experience here in Australia and overseas, touched upon the Book of Kells, the use of Vellum for contemporary important documents where signatures "last for a thousand years", tips from her studio and materials.

Since then I've been more inclined to consider the presence of word forms in my own art, in any medium and am more confident about doing so.

Thank you to Gemma Black. Excellent" **Jenny Masters.**





## The Light in Winter



The Art Society was very pleased to have Julie Payne open its latest exhibition on June 4th, fresh from a very successful and enjoyable recent 'Colour and Pencil' workshop she conducted at the LFG. Julie is an artist who works primarily in drawing media, creating figurative and abstract compositions that have a subdued and delicate bearing. The artist has academic training in architecture and sculpture.

*'I love working with a very diverse range of concepts and learning new techniques. These include drawing, sculpture, painting and ephemeral gardens' - Julie.*

Keeping this in mind, Julie commented on the diverse range of mediums and techniques used in this latest themed, members exhibition, **The Light in Winter**, and was impressed with the various interpretations, using abstract work, sculpture, charcoal, pastel, oils, photography and watercolour, and initiated discussion with the audience. A delightful opening.



Julie with president Nikki Munro and Carol Sheppard



Annie Wilson's 'Dormant'  
a 3D textile



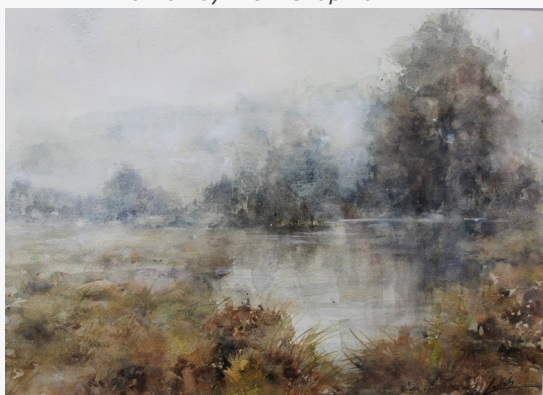
## The Light in Winter



Bishal Pandey and wife Nabina Sapkota



*'Crisp and Soft, Riverside Ross'*  
an oil by Vicki Chapman



*'Cradle Light'* a watercolour  
by Leanne Halls



Wendy Galloway  
*'Feeling Frosty'* in mixed media



*'Cold Winter Toes'*  
Lois Anderson a ceramic

# THREE MONTHS AT A GLANCE

*Please check the website ([www.artstas.com.au](http://www.artstas.com.au)) and e-mails from the AST President for calendar updates regarding exhibitions, upcoming workshops and meetings of specialist groups (e.g., watercolour, botanical art, oil and plein air groups)*

## JUNE

Wed 1st  
Sun 26th

Entries open for 138th Annual Exhibition  
**Change over**, collection of 'Light in Winter' and hand-in for feature artist Robyn Malcolm '**Chromatopia**'

## JULY

Sat 2nd  
Fri 15th

**11am opening of Chromatopia**  
**Workshop 'Flowers' with Sebastian Galloway**  
**9.30-3.30 LFG**

Wed 20th  
Tues 26th

Entries and payment close 5pm for 138th Annual Exhibition  
Deliver to 138th Annual Exhibition Long Gallery, Salamanca 1pm to 5pm

Fri 29th  
Sun 31st

**Opening '138th Annual Exhibition' 6.30pm**  
**Change Over**, collection of 'Chromatopia' and hand-in for Invited Artist '**Luke Wagner**'

## AUGUST

Sat 6th  
Sun 7th  
Thurs 18th  
Fri 19th  
Sun 28th  
-

**Opening 'Luke Wagner', LFG 11am**  
collection of '138th Annual Exhibition' between 4 and 6pm  
**2 day Portraiture Workshop with Sebastian Galloway**  
**9.30 - 3.30 LFG**  
**Change Over**, collection of 'Luke Wagner and hand-in for feature artists Botanical Art Group '**Botanicals Our Way**'

## SEPTEMBER

Fri 2nd  
-  
Sat 3rd

**Workshop Amber Koruluk Stephenson**  
see website for details  
**Opening 'Botanicals our Way' LFG 11am**

Fri 9th  
-  
Sun 25th

**Workshop Amber Koruluk Stephenson**  
see website for details  
**Change Over**, collection of 'Botanicals our Way' and hand-in for members '**In the Stillness**'

## OCTOBER

Sat 1st

**Opening 'In the Stillness' LFG 11am**

# Art Society Members Exhibitions & Workshops

## Exhibitions

**138<sup>th</sup> Annual Exhibition**, Long Gallery, Salamanca

1 or 2 works completed in the last year

\$20 entry fee per work

Entries open, 1<sup>st</sup> June Entries close 5pm Wed 20<sup>th</sup> July

Deliver works to the Long Gallery, Tues 26<sup>th</sup> July 1.00-5pm and  
Wed 27<sup>th</sup> 9 - 10am

Exhibition Opening Friday 29<sup>th</sup> July at 6.30pm

Collection of works Sunday 7<sup>th</sup> August between 4 - 6pm

See the website for full Conditions of Entry and Entry Form

**July** exhibition is full of colourful works by Robyn Malcolm

**August** features an exhibition by Luke Wagner

**September** will spring to life with Botanical Art

**October** is the members exhibition – 'In the Stillness'

**November** will have an exhibition by the Heritage Art Group

**December** is another members exhibition 'Urban Light'

## In Your Ear!!

There are some great art podcasts out there for you.

**Talking with Painters** – an Australian series hosted by Maria Stoljar

**The Great Women Artists Podcast** - English series with Katie Hessel  
(the Dora Mar and Yoko Ono ones are really interesting)

**Plein Air Art-** American series with Eric Rhoads, of the Streamline video  
and Plein Air magazine fame (the interview with Russian artist Zufar  
Bikbov is good, gives an insight into art education in Russia)

## Workshops

**Landscape Cleansing, Coloured pencil workshop with Richard**

**Klekocuiik** Unfortunately this workshop has been postponed to October.  
Two day workshop, Thursday 13<sup>th</sup> and Friday 14<sup>th</sup> October. Learn to take  
out the detail, but retain the essence of the landscape. Inspiring and  
challenging class with everyone working from their own interests and  
source materials.

**Flowers in oil with Sebastian Galloway**, Friday 15<sup>th</sup> July

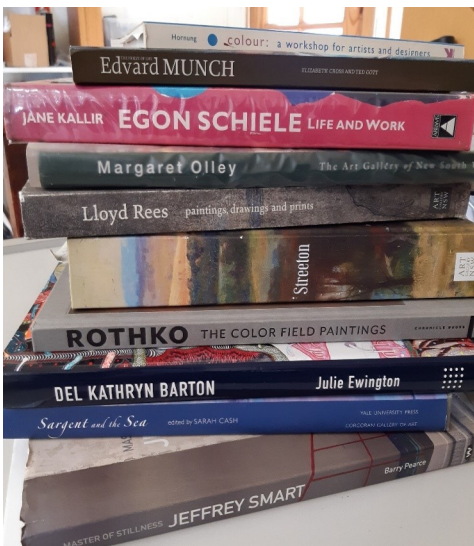
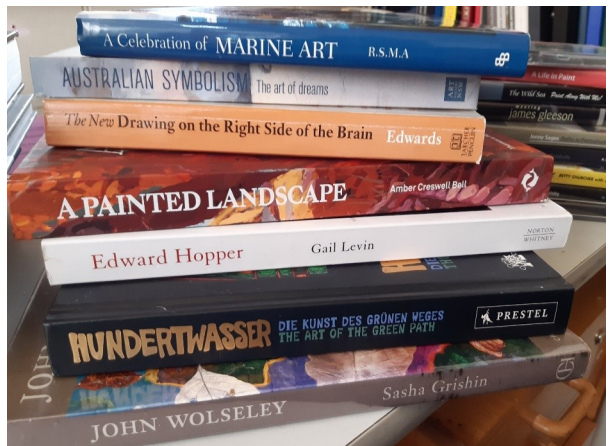
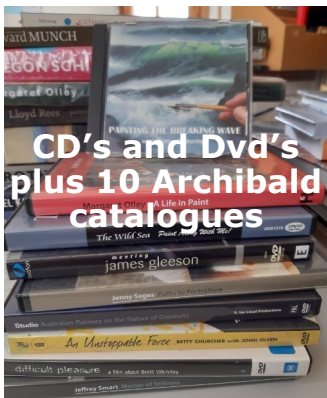
**Portraits in oils with Sebastian Galloway**, Thursday 18<sup>th</sup> and Friday  
19<sup>th</sup> August Check the website for more information.

**Workshop with Amber Koruluk Stephenson**, Friday 2<sup>nd</sup> and 9<sup>th</sup> Sep-  
tember



## A Wonderful Imms' Gift

The Art Society has been fortunate to have been offered a very generous gift of some 17 books, from Roger Imms' amazing library, by his wife Dianne, who was keen to have them available for use to members of the society. I was in seventh heaven choosing from the many shelves of Roger's eclectic, high-quality publications. The collection reflected his appreciation of a broad range of subjects and interests on so many levels, obviously drawing inspiration for his art from diverse sources. We are very lucky to have them available to our members to borrow from the library.



For new members **sign out** your loans in the BIG BLACK BOOK at the desk.

Please **sign back in when returning** your books, leaving them in the BIG YELLOW BOX in the library.

Loan time is four weeks.

Contact the library chick on 0408295118 or email

[csmeech@bigpond.com](mailto:csmeech@bigpond.com) if you have any book suggestions, want extension time or have a question. So come 'out the back' and explore our new additions all marked with a bookplate on the inside cover.

**HAPPY BORROWING!** Susie

## MEMBERSHIP NEWS

We welcome back Leanne Halls as an exhibiting member, and we have a few new faces as well. These are Peter Walsh, Joscelyn Patman, Laurie Hanson, Sarah Stewart, Kira Lin and a returning member from many years ago, Patricia Turner Smith.

In this last quarter we have been joined by two new social members, Ajax Chen and Peter Yates.

We welcome our new members and look forward to a long and happy association.

***Zane Yasuda, Membership Secretary***

## Roster Volunteers

Would you like to volunteer? Check out the Gallery Roster on the AST website. If you have any problems please contact Maggie Bullock on 040 323 6696 or [maggie44.b@gmail.com](mailto:maggie44.b@gmail.com)

## CONTACT AND PAYMENT DETAILS

If you are an AST member having trouble logging onto the website then email [info@artstas.com.au](mailto:info@artstas.com.au) and let us know.

Secretary and all enquiries	Gabby Muir	PO Box 403, Lenah Valley, Tasmania 7008 <a href="mailto:info@artstas.com.au">info@artstas.com.au</a> or <a href="mailto:gabby.muir@bigpond.com">gabby.muir@bigpond.com</a>
Roster	Maggie Bullock	<a href="mailto:maggie44.b@gmail.com">maggie44.b@gmail.com</a>
Gallery News	Susie Meech	<a href="mailto:info@artstas.com.au">info@artstas.com.au</a>
Library	Susie Meech	<a href="mailto:csmeech@bigpond.com">csmeech@bigpond.com</a>
Instagram and Facebook	Robyn Malcolm	<a href="mailto:robynmacolm@netspace.net.au">robynmacolm@netspace.net.au</a>
Lady Franklin Gallery	0490 910 229	Please leave a message
Payments: Membership, workshops	The Art Society of Tasmania Inc.	Direct Debit (please identify any payments) BSB 067005 A/C 28005288 Payments can also be made in person at the gallery by cash, credit card or cheque

# Urban Sketchers



## Urban Sketchers

### Our mission

Our mission is to raise the artistic, storytelling and educational value of on-location drawing, promoting its practice and connecting people around the world who draw on location where they live and travel.

### Our History

In 2007, a global community of urban sketchers began to form when Seattle-based journalist and illustrator Gabriel Campanario created an online forum “for all sketchers out there who love to draw the cities where they live and visit, from the window of their homes, from a cafe, at a park, standing by a street corner..always on location, not from photos or memory.”

A year later, Campanario invited a group of sketchers to share their drawings and Storytelling in a blog, Urban Sketchers, where readers could “See the World, One Drawing at a Time.” The blog helped the community gain visibility and inspired drawing enthusiasts from all over to sketch in the spirit of this manifesto:

1. We draw on location, indoors or out, capturing what we see from direct observation.
2. Our drawings tell the story of our surroundings, the places we live and where we travel.
3. Our drawings are a record of time and place.
4. We are truthful to the scenes we witness.
5. We use any kind of media and cherish our individual styles.
6. We support each other and draw together.
7. We share our drawings online.

**Hobart Urban Sketchers** started out as the Hobart sketchers in June 2015, with a small group of people getting together to sketch. In September 2017 we joined the world-wide Urban Sketchers and we now have 247 members.

The group meet on the second Sunday of each month at 11am, the destination is announced on our Facebook page well before the event.

Everyone is welcome and there are no restrictions on artistic talent or a particular medium, just on location drawing/painting.

Above is the mission statement for Urban Sketchers, we try to follow this to keep in line with the international groups.

Urban Sketchers is an international nonprofit, dedicated to fostering a global community of artists who practice on-location drawing.







pARTicipate workshops happen the first Sunday of each month and will be advertised on our Facebook page and website two weeks prior to the workshop date.

FB page:

<https://www.facebook.com/tasmuseum>

Website: <https://www.tmag.tas.gov.au/> bookings are essential.

**Free Art Tours** of the Gay Hawkes: House of Longing exhibition are offered every Friday, Saturday and Sunday at 11am. We also have general museum tours offered on the same days at 1.30pm

### EXHIBITION

## Sally James : Water and Sky

SCHOOLHOUSE GALLERY

11AM - 5PM WEDNESDAY - SUNDAY, 29 JUL-21 AUG 2022



*Water and Sky* will show reduction linocuts that depict the Tasmanian landscape, with particular emphasis on how it surrounds, influences, and nurtures us. The landscape is presented as a vibrant system of movement, life, and interconnections. Sally James also draws attention to aspects of her surroundings that may be hidden or unnoticed, by depicting real places from a 'magical' perspective.

**The opening will be on Sunday the 31st of July at 2:00pm at the Rosny Farm Arts Centre**, and anyone from the Art Society who would like to come would be welcome. I'll also be doing a couple of artist talks/demonstrations during the exhibition at times yet to be decided.

### Why Alone time Is essential for creatives and how to prioritise it. | ArtsHub Australia - Madeleine Dore

Alone time is an essential part of the creative process, but can often be neglected or interrupted. Here's how artists, writers and musicians stick to their plans for solitude and the benefits they find in being alone. *(below are some excerpts from this article by Madeleine Dore)*

**1. On scheduling alone time** 'Time for myself is one thing that I factor into my week as much as I can. Even though I live on my own and I could say I always have time on my own, it's a very different thing to put it in the diary as you would if you were meeting a friend or going on a date and nothing gets in the way and you don't cancel on yourself.' [Jill Stark](#), journalist and author

**2. On acknowledging distractions and daydreaming** 'For me all my studio time is alone time, but I do get terribly distracted. When the pressure is on I can block the world out a little easier; a good pair of headphones helps too. I need to be alone to allow for all the daydreaming that I need to create new works. I do think it's essential to discuss ideas with others and that can often lead to surprising outcomes, but the intimate core of my works comes from quiet times at my desk. Sometimes just sitting and staring at what is around my studio leads to the most exciting new connections.' – [Carmel Seymour](#), visual artist

**3. On the importance of doing nothing** 'I know this sounds really alien to us in this world where we are constantly distracted, but actually just sitting and doing nothing can be really helpful – and literally nothing, not reading a book; just sitting and thinking and letting whatever comes into your head.' – [Jill Stark](#)

**4. On integrating alone time with the rest of your life** 'I do find it hard to turn down social obligations to make time for the studio. I tend to think I will be able to get to the work later especially now my studio is at home, ignoring the fact that I will feel tired after cramming too much in. Using socialising as a reward for work done has worked for me in the past. The joy of a really good workflow is pretty rewarding too, worth the fear of missing out you might experience when planning a few days of creative hibernation. I think most artists, painters especially, need an intimate relationship with the details of their work and this can only happen when you are alone. The real trick is how to balance this with the rest of your life.' – [Carmel Seymour](#)

Madeleine Dore is a freelance writer and founder of [Extraordinary Routines](#), an interview project exploring the intersection between creativity and imperfection. She is the previous Deputy Editor at ArtsHub. Follow her on Twitter at [@RoutineCurator](#)

### **Waiting for Light - Invited Artist - Luke Wagner**

**Lady Franklin Gallery**

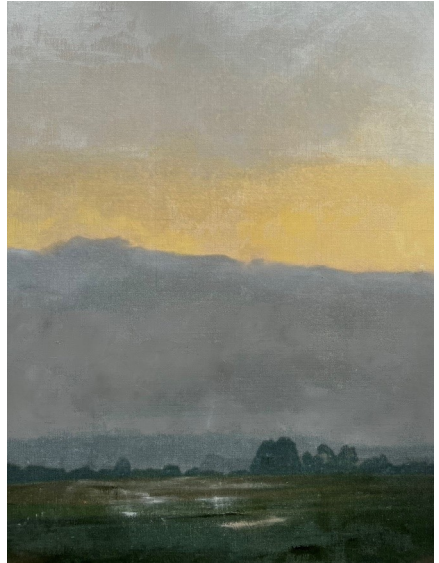
**Weekends from Sat 6th Aug to Sun 28th Aug**

My exhibition has formed after spending time at Woolmers Estate near Longford in Northern Tasmania.

I was first attracted by the landscape and the history of the Archer family but after a time I found that the light was what spoke to me most.

I understood that it was more productive to sleep with a lazy eye on the window waiting for the light to invite the possibility of a painting and then entering the landscape at the right time.

My exhibition is titled Waiting for Light.



There will be 12 paintings all 82 x 122cm.

I call them Tone Poems - but each will have its own title. Simple paintings with low saturation - dusk and dawn.

It is interesting that Thomas Archer built an upstairs suite for Sir John and Lady Franklin, to have accommodation at Woolmers. - I don't think it was ever used by them but their legacy on the estate exists and having, now lived at Government House for the past 10 years, I feel the Franklins' legacy as well.

**Viewers' Choice Winner**  
for

**Flinders Bruny and Beyond**  
- Inspired by Plein Air

**Rick Crossland**





## EXHIBITION OPPORTUNITIES



There are changes afoot for the popular Artlands exhibition held at Dysart House in Kempton. Old Kempton Distillery has enlarged its business and is no longer able to accommodate our growing exhibition. It is now -

### **ARTLANDS AT THE CHURCH**

**A weekend celebrating art.**

Saturday and Sunday 8<sup>th</sup> and 9<sup>th</sup> October

2022, 10am to 4.00pm at St Mary's Church, Kempton.

**Exhibition Opening at 11am Saturday 8<sup>th</sup> October 2022.**

For entry forms please email [bassettcarolyn7@gmail.com](mailto:bassettcarolyn7@gmail.com). We hope all our past and new exhibiting artists will continue to support us in this new venture. **Carolyn Bassett** AST Life member



The Kentish Arts Commerce and Tourism Inc are looking for nine artists from around Tasmania to be selected to paint a mural over a five day period based on the the 'The Place I Call Home' to be part of an unique 'Mural Trail' beginning and ending in Sheffield. The People's Choice Award \$7,000 and Highly Commended Award \$2,000 will be offered. The requirements of entry and more information can be found on

[info@murfest.com.au](mailto:info@murfest.com.au)

## A Shout Out to Sculptors

*To Be Part of*

**THE TASMANIAN BUSHLAND GARDEN**

**2022 Sculpture Trail**



The Sculpture Trail will be held in our beautiful east coast regional botanic garden at Buckland opening on Sunday 9<sup>th</sup> October to coincide with our springtime Open Day and will continue for 6 weeks.

Many of you have supported us in the past and we hope you will do so again. Your work enhances our special environs and will encourage sales. Please contact Jill Harris [jill.harris2011@gmail.com](mailto:jill.harris2011@gmail.com) for any queries.

### The Gallery Skylight history uncovered

Neil Shillito is the author of a recent chapter of a book featuring Lady Franklin Museum. He approached the society offering us bound copies for the interest of our members, as it has just been made available by the State Archives.

It is part of the book **11 Projects From an Unremarkable Practice**, a number of projects conducted in collaboration by him and his group of fellow architects, involving the restoration of heritage listed buildings in Tasmania. Its 12 pages describe in great detail the story of Jane Franklin, history of the building and project with associated architectural drawings.

Neil writes:

*"Back in the early 2000s the practice was commissioned by HCC's Brendan Lennard to work on the reinstatement of the original roof light (sky light) and upgrade of the interior".*

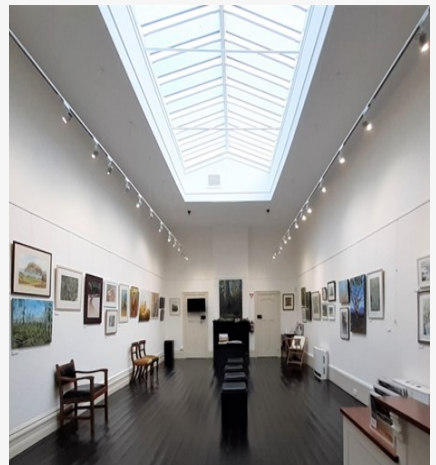
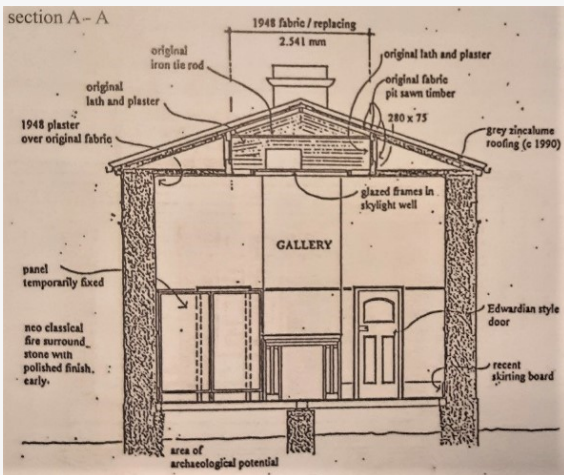
Now, the chapter is a fascinating asset to our library and archives, with 4 copies kindly provided by Neil.

The following is an excerpt from the Conservation Management Plan 2020:

#### 'DESCRIPTION

The Original skylight in the building (1842) is concealed above a false ceiling with three glazed panels. With this false ceiling removed, there is a centrally placed well the sides of which are original, while the roof has been replaced.....

The location of the skylight in relation to the roof appears to represent the Naos of the Classical Greek Temple. It appears that the skylight in this building may have been used to give a notional identification to this inner space.....as a Glyptotheca (container for statues), the skylight may have been used to define the location of the sculptures, while the paintings would be arranged on the walls surrounding them'.

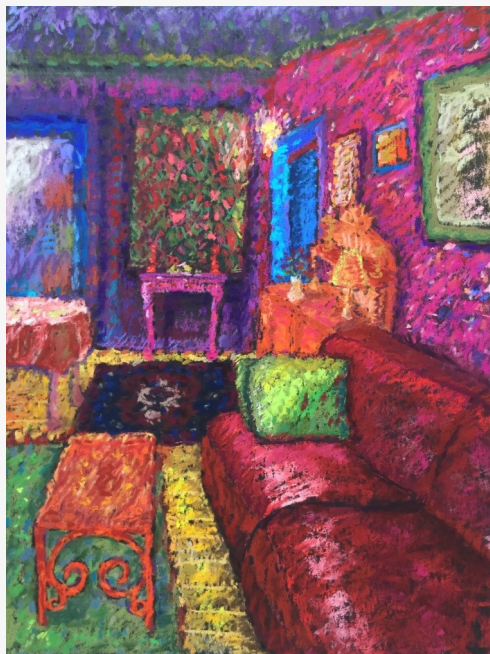


### For the Love of Colour - Robyn Malcolm

The famous colourist Henri Matisse said "Colour exists in itself, possessing its own beauty". I have always loved colour but it was my introduction to pastels that changed the way I use it.

This love affair with pastels began during a Have a Go Workshop held by the Art Society and run by Susie Meech. Susie had trays of beautiful pastels in every colour you can imagine and she told us to use whatever we wanted. At one stage I was looking for a particular green and Susie managed to locate it in a tray full of greens. I was so impressed.

I use oil paint or soft pastel on black paper as it enables the layering of colour. I have always painted and always used colour to express my ideas. The beauty of pastels is I can reach out and choose a colour without having to mix it. When you are impatient this is hugely convenient. My pastel work is framed using "art glass" to maximise colour and minimise reflections.



I was born in Hobart and after some time in Western Australia now live in Hobart. I initially painted using acrylics, then ventured into designing "art to wear" selling work in New York and San Francisco, some examples of which are on display at my exhibition *Chromatopia*. I veered away from art completely for a while and recently, thankfully, returned to art full time.



## Member News

In 2015 – 17 I attended Deny Christian's New School of Classical Art in Hobart and was taught to paint in the classical style using oil paint. You will see her influence in some of the work exhibited in *Chromatopia*.

Much of the work in my *Chromatopia* exhibition was completed during the pandemic where we have lived in what my son calls the Hermit Kingdom, initially because we didn't want to catch the virus and give it to vulnerable loved ones and then because it became a habit we quite liked.



Many interiors and still-lives are the result of seeing the beauty in the everyday. Once I find a subject I like I tend to make a series based on that subject at different times of the day in different light.

Another favourite artist is Wassily Kandinsky who said, "Colour is a power which directly influences the soul".

**Robyn Malcolm's exhibition *Chromatopia* is open from 2nd – 31st July on weekends 11- 4.**

## Art Society Workshops

### 'FLOWERS' WORKSHOP WITH SEBASTIAN GALLOWAY



'Flowers' workshop with Sebastian Galloway  
Sebastian will show oil and acrylic painters how to create beautiful floral paintings.

Friday 15 July

9:30am - 3:30pm LFG

Members \$65.00

Non members \$75.00

Materials list to follow.

register at [www.artstas.com.au](http://www.artstas.com.au)



### 2-DAY PORTRAITURE WORKSHOP WITH SEBASTIAN GALLOWAY

Sebastian will show oil and acrylic painters how to create detailed, realistic portraits.

18 and 19 August

9:30am - 3:30pm LFG

Members \$130.00

Non members \$150.00

register at [www.artstas.com.au](http://www.artstas.com.au)



**COMING** Workshop with Amber Koruluk Stephenson,  
Friday 2<sup>nd</sup> and 9<sup>th</sup> September

see AST website for details

### COLOURED PENCIL WORKSHOP WITH RICHARD KLEKOCIUK



### LANDSCAPE CLEANSING

**Rescheduled**

**Lady Franklin Gallery,  
9.30am to 3.30pm,  
13th and 14th October**

Most of us prefer detail in our artwork, often the more, the better. Have you tried removing as much detail as you can from your work without it losing its integrity? It can be done and I will show you how. Bring an example of your own work (or several) or suitable photographs

and let's draw them in coloured pencil! Besides coloured pencils, I will provide a choice of coloured papers that will amaze you when pencils are applied. Still life, figurative and abstract work is also welcome.

I will bring examples of my own work to illustrate this technique.

**Everything will be supplied.** You can bring an A3 – size drawing board if you wish. This workshop is suitable for all abilities.

Cost Members \$95, non members \$110 register at [www.artstas.com.au](http://www.artstas.com.au)

### HADLEYS ART PRIZE 2022

Since its inception in 2017 Art Society members Maggie Nettleship and Lynn Hasenkam have been running tours of the Hadleys Art Prize Exhibition, with winning artworks on display at the Hadley's Orient Hotel.

We tell you a little of the hotel and its history, the inception of the exhibition, the inspiration behind it, the judging process, the artists and the stories behind the works. Each tour lasts approximately one hour.

This year we are showcasing 35 artists and are thrilled to see 15 Tasmanians on the catalogue.

We look forward to welcoming you to The Hadleys Art Prize for 2022. The tours are free and will run most afternoons (tbc) and other times by arrangement.

**Dates:** Winners are announced on the 22nd July.

The exhibition opens to the public on the 23rd and finishes on the 21st August.

The People's Choice winner is announced during the last week of the exhibition.

Lynn Hasenkam



## Exhibition Notices

### JULY EXHIBITION



*The Art Society invites you to a  
feature artist exhibition*



## Chromatopia

*Of artworks by*

**Robyn Malcolm**

Official opening Sat 2<sup>nd</sup> July 11 am  
by Nicola Mason, CEO Smitten Merino

Lady Franklin Gallery  
268 Lenah Valley Rd  
weekends 11-4 [www.artstas.com.au](http://www.artstas.com.au)

### AUGUST EXHIBITION



*The Art Society  
Invited artist exhibition*

Waiting for Light

**Luke Wagner**

Opening Sat Aug 6th 11am

**Lady Franklin Gallery**  
268 Lenah Valley Rd  
weekends 11-4 [www.artstas.com.au](http://www.artstas.com.au)

### SEPTEMBER EXHIBITION

## BOTANICALS OUR WAY

3rd to 25th Sept



You are invited to a feature artists exhibition by The Botanical Art Group

Opening Sat September 3rd at 11am LADY FRANKLIN GALLERY  
Ancanthe Park Lenah Valley Rd - Open weekends 11-4 [www.artstas.com.au](http://www.artstas.com.au)

# Exhibition Notices

## AUGUST - The 138th ANNUAL EXHIBITION



2021 Annual winner - 'Balancing Act'  
by Zane Yasuda



The Art Society of Tasmania  
Proudly presents its  
138th Annual Exhibition  
In the **Long Gallery**, Salamanca

The exhibition opens  
Friday 29th July at 6.30  
by the Lord Mayor of Hobart Anna Reynolds  
And continues until 9th August

The Art Society's Annual Exhibition will be held in the Long Gallery again this year.

Over the last few years the committee has been keen to enable more of our talented members to be included in this prestigious exhibition. All work should have been completed within the last 12 months. Work may have been previously exhibited, but not exhibited previously in the Long Gallery.

Please select up to two works you are proud of which will complement the works of fellow members. It is \$20.00 for each entry.

We look forward to another exciting varied exhibition.

### Prizes

- **Artery Award for the Best Overall Work - \$1000 voucher** from Artery
- **Second prize-** \$500 from AST
- **Third Prize** - \$250 voucher from ARC Framing
- **Hobart City Council Prize for the Best Scene of the City of Hobart**
  - High Tea and a Tour of the Town Hall and a Book about the City of Hobart
- **Highly Commended** - \$200 voucher from Phil's Framing
- **Highly Commended** - \$200 cheque from Lauder and Howard
- **Highly Commended** - \$200 voucher from Just Frames
- **Highly Commended** - \$200 voucher for Wagners Framing
- **People's Choice Prize** - \$250 voucher from Adart

## SPONSORS

Please support our sponsors who support us!



**Lauder and Howard**

**Antique Store**

185 Campbell St Hobart  
(03) 6289 6946

**Phil's Framing**  
**Margate**

**Picture it Framed** 289 Main Rd, Glenorchy.  
Jeremy 6272 7933 / 0413 532 822  
**15% discount on complete framing**



**Just Frames**



Andrew Peters from **JUST FRAMES** is offering a **10% discount**  
22 Main Road Moonah